

## UD3se

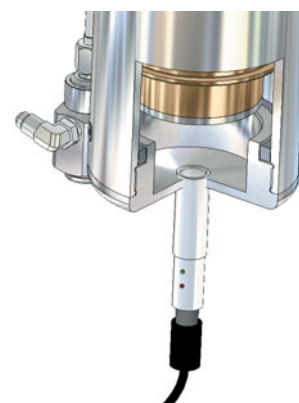
The Reckmann UD3se is a below deck mounted electric furling gear. The UD unit is fixed in the deck, no chainplate is needed. The special Reckmann sphere technology is maintenance free. The hydraulic real time adjuster is equipped with an electronic position indicator. Like all Reckmann electric furlers, the UD has an emergency manual drive to be operated safely on deck level with a standard winch handle.



deck attachment



manual backup drive



electronic position position indicator

### technical data

	UD3se
forestay	up to rod -60
foils	S3 - S4.5
turning moment	270 Nm
holding moment	1400 Nm
max. adjuster pull	12t @ 250 bar
adjuster stroke	100 mm